



COMPONENTI PER ASCENSORI



## Porta a soffietto | Folding door

Automatica o manuale

Automatic or manual





Grazie al costante orientamento, alla qualità e alla innovazione tecnologica, **LTL oggi vanta un elevato know how nella lavorazione di precisione nel settore della deformazione della lamiera.**

La flessibilità produttiva, unita all'uso di macchinari tecnologicamente avanzati, consente ad LTL la possibilità di realizzare componenti in tempi rapidi. **Un modo per essere più vicini al cliente e alle sue esigenze.**

LTL prevede produzioni su progetto, destinate a soddisfare esigenze mirate che possono riguardare aspetti peculiari del prodotto come: **tecnologia, funzionalità, materiali e dimensioni.**

La tecnologia avanzata di cui si dispone e l'alta professionalità delle risorse umane, hanno consentito ad LTL di diventare un punto di riferimento certo per la qualità e l'affidabilità dei prodotti manufatti.

Il nuovo stabilimento LTL è attrezzato con la strumentazione necessaria per la realizzazione di componenti ascensoristici di **alta qualità.**

Thanks to the constant orientation, quality and technological innovation, LTL today boasts a high level of know-how in precision in the field of metal forming.

Production flexibility, combined with the use of technologically advanced machinery, allows LTL to make components quickly.

One way to be closer to the customer and its needs.

LTL provides products designed to meet targeted needs that may relate to specific aspects of the product such as: technology, functionality, materials and sizes.

The advanced technology that you have and the high professionalism of human resources, have allowed LTL to become a point of reference for the quality and reliability of manufactured products.

The new plant is equipped with the necessary instruments to produce high-quality components.





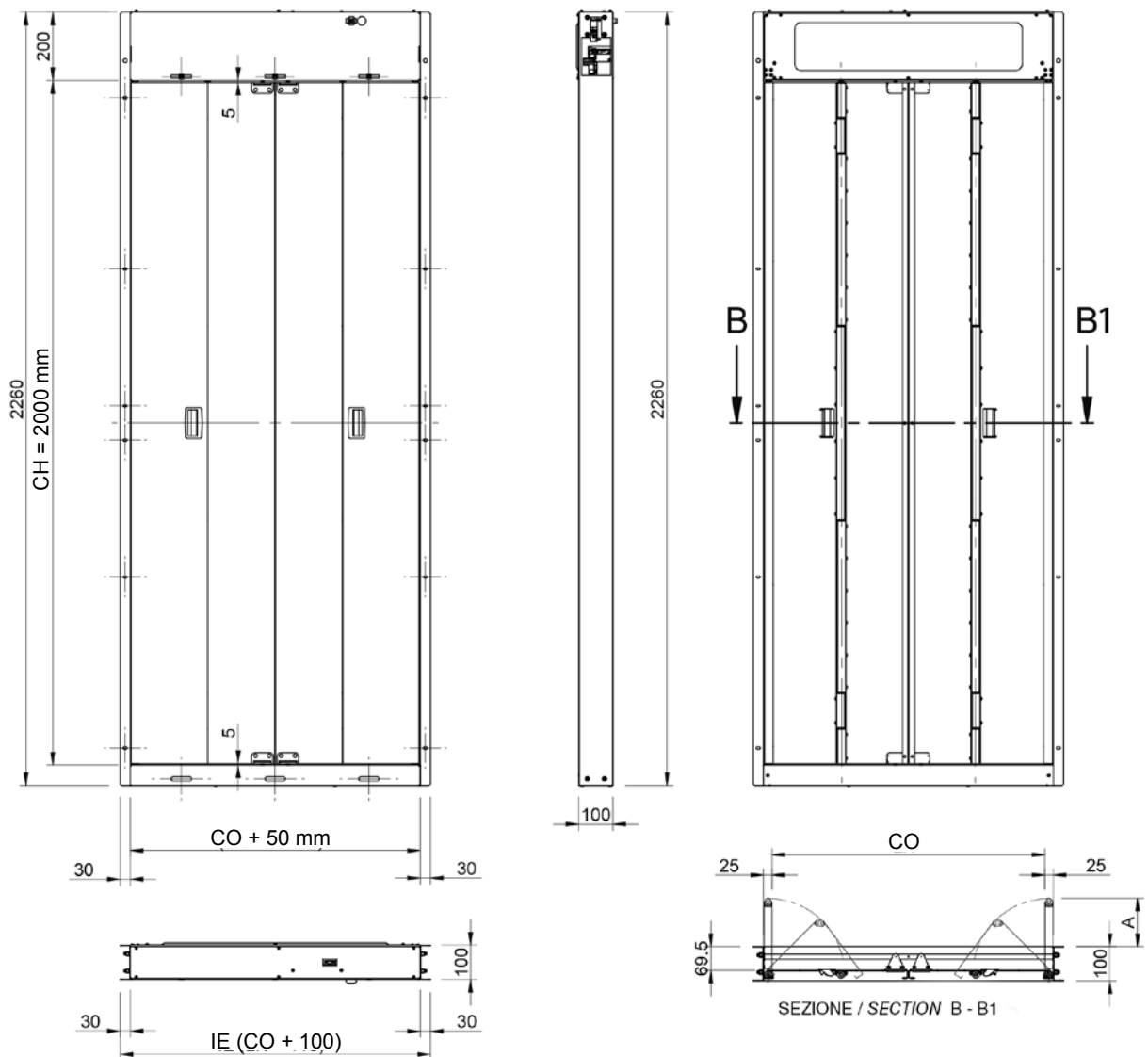
**Porta a soffietto automatica**  
Automatic folding door



# SOFFIETTO AUTOMATICO / AUTOMATIC FOLDING DOOR



OPERATORE AFD-200 / OPERATOR AFD-200



CO	500	550	600	650	700	750	800	850	900	950	1000	1050	1100	1150	1200
A	65.5	78	90.5	103	115.5	128	140.5	157	165.5	178	190.5	203	215.5	228	240.5

CO= LUCE NETTA / CLEAR DOOR OPENING

IE = INGOMBRO ESTERNO / OVERALL DIMENSIONS

A = INGOMBRO PORTA APERTA IN CABINA / OPEN DOOR DIMENSIONS INSIDE THE ELEVATOR CAR

CH = ALTEZZA PORTA / CLEAR DOOR HEIGHT

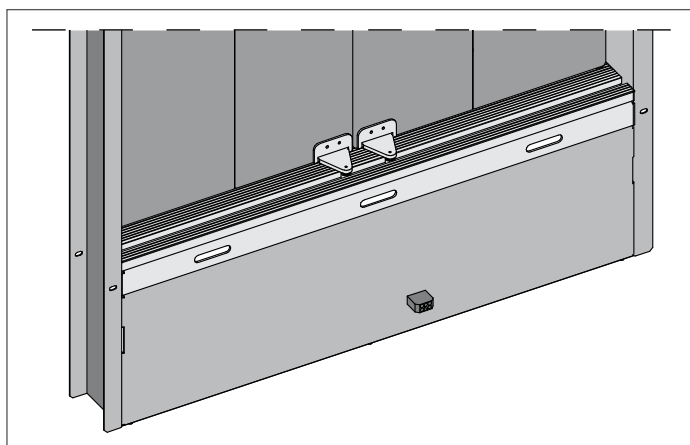


## CARATTERISTICHE / FEATURES

- INSTALLAZIONE SEMPLICE E VELOCE
  - SOGLIA IN ALLUMINIO
  - INSTALLAZIONE PER TESTATA RIDOTTA
  - ALIMENTAZIONE: 24V DC / AC
  - H LUCE PORTA: min 1900 - max 2200
  - SISTEMA ELETTRONICO DI COMANDO
  - GESTIONE DELLE RAMPE DI VELOCITA'
  - COSTOLA MOBILE ELETTRONICA
  - COMPLETA ACCESSIBILITA' ALLA MECCANICA
  - SBLOCCO MANUALE PER USCITA DI SICUREZZA
- SIMPLE AND QUICK INSTALLATION
  - ALUMINUM SILL
  - INSTALLATION FOR REDUCED HEAD.
  - POWER SUPPLY: 24V DC / AC
  - H CLEAR DOOR : min 1900 - max 2200
  - ELECTRONIC DRIVE CONTROL
  - MANAGEMENT OF VELOCITY PROFILES
  - ELECTRICAL SAFETY EDGE
  - FULL ACCESS TO THE MECHANICS
  - MANUAL BRAKE RELEASE FOR SAFETY EXIT

## OPZIONI / OPTIONS

- SOGLIA IN INOX
  - BLOCCO FUORI PIANO
  - BLOCCO FUORI PIANO MAGNETICO
  - CAMMA DI SBLOCCO STD O RIDOTTA
  - ALIMENTAZIONE: 230 V AC
  - TASTIERINO DI CONTROLLO
  - MODELLO OPERATORE INVERSO
- INOX SILL
  - CAR DOOR LOCK
  - MAGNETIC CAR DOOR LOCK
  - RETIRING CAM STD OR REDUCED
  - POWER SUPPLY: 220 V AC
  - CONTROL KEYPAD
  - INVERTED OPERATOR



OPERATORE INVERSO / INVERTED OPERATOR



CAMMA DI SBLOCCO RETRATTILE  
RETIRING CAM

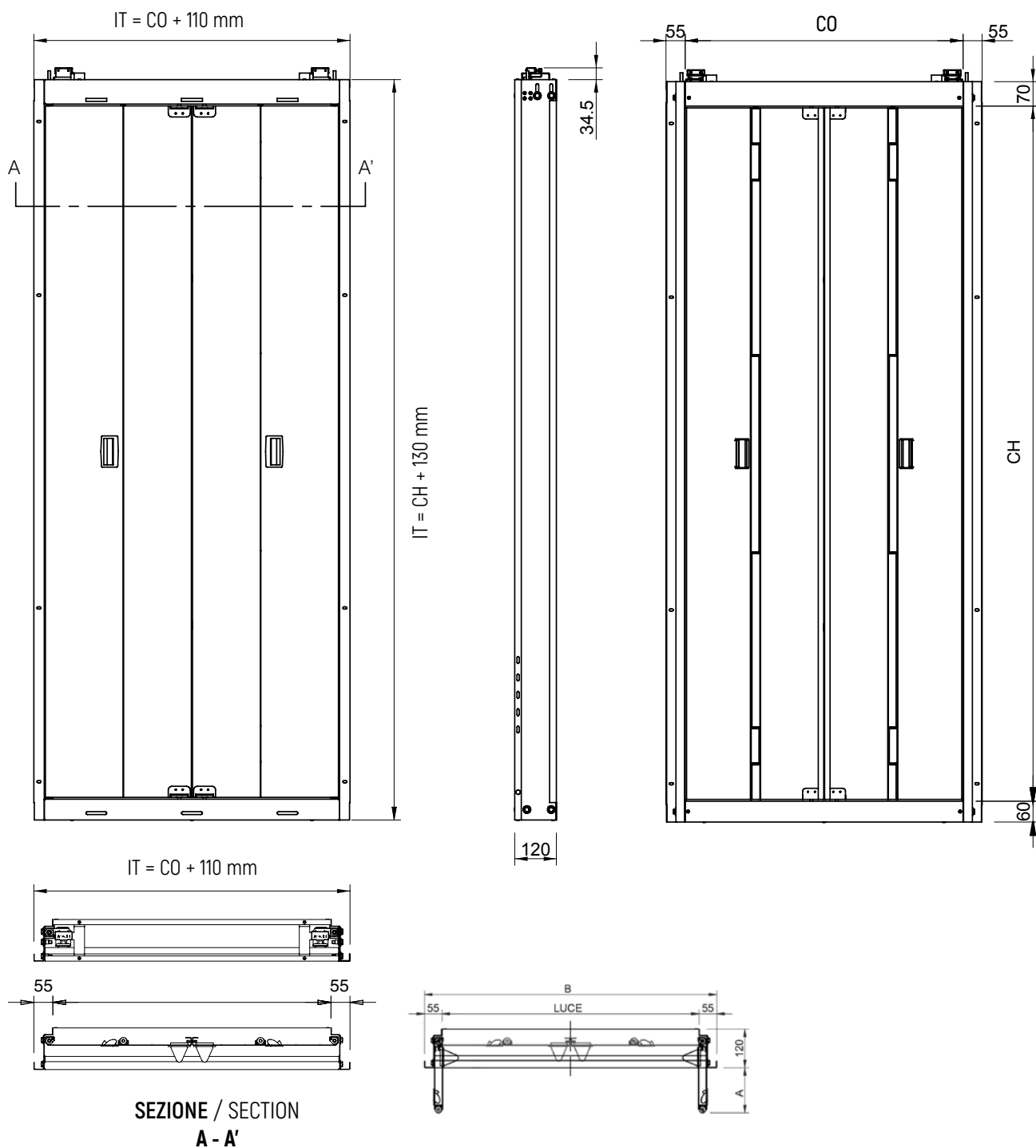


TASTIERINO DI CONTROLLO  
CONTROL KEYPAD



**Porta a soffietto manuale**  
Manual folding door

# SOFFIETTO MANUALE / MANUAL FOLDING DOOR



SEZIONE / SECTION  
A - A'

<b>CO</b>	500	550	600	650	700	750	800	850	900	950	1000	1050	1100	1150	1200
<b>A</b>	65	77.5	90	102.5	115	127.5	140	152.5	165	177.5	190	202.5	215	227.5	240

CO = LUCE NETTA / CLEAR DOOR OPENING

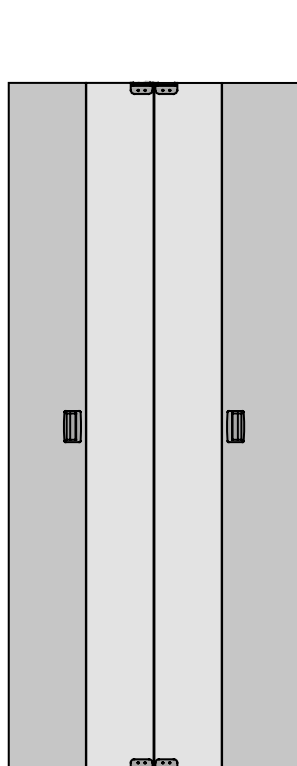
IT = INGOMBRO TELAIO / FRAME OVERALL

A = INGOMBRO PORTA APERTA IN CABINA / OPEN DOOR DIMENSIONS INSIDE THE CAR

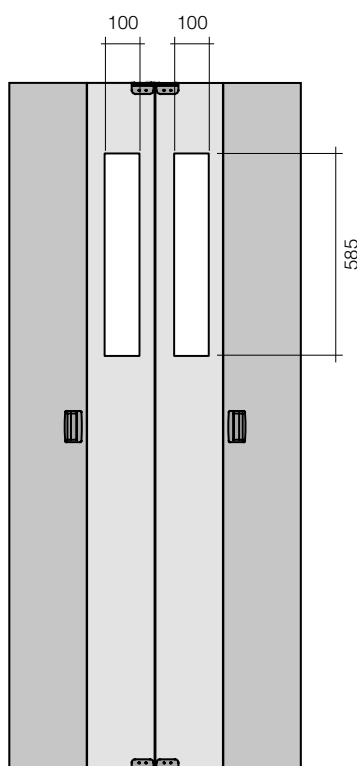
CH = ALTEZZA PORTA / CLEAR DOOR HEIGHT



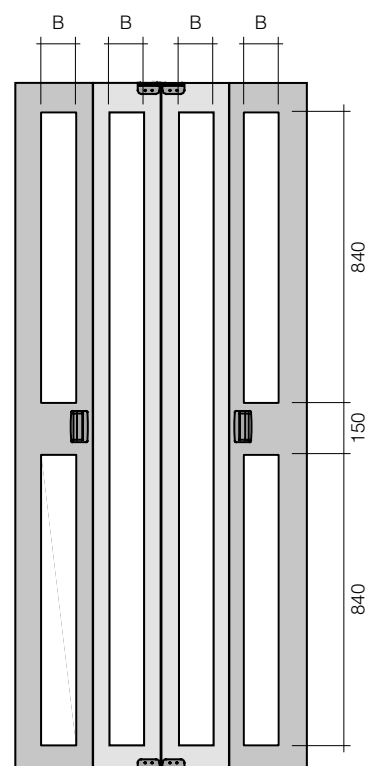
## DETTAGLI / DETAILS



**C1**  
CIECA / BLIND



**V1**  
VETRO SPIA / VISION PANEL



**P1**  
PANORAMICA / PANORAMIC

CO = LUCE NETTA / CLEAR OPENING    B = CO / 4 - 85

La porta a soffietto manuale di cabina LTL può essere installata su cabine allocate in vani in muratura e/o incastellature metalliche aventi pareti lisce e continue nei lati adiacenti agli sbarchi.

The manual folding door LTL can be installed on cabins allocated in masonry elevator shaft and/or metal structures with smooth walls and continuous in the sides adjacent to the landing.

# RIVESTIMENTI / COVERING

## SKINPLATE



A1



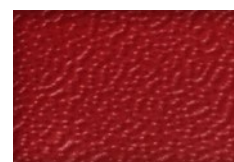
A2



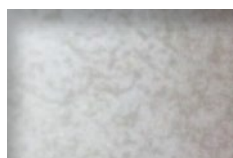
A4



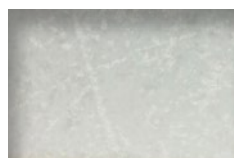
G1



R2



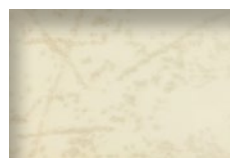
PPS1



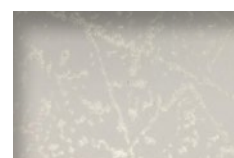
PPS10



PPS11



PPS15



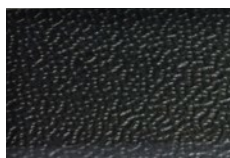
PPS25



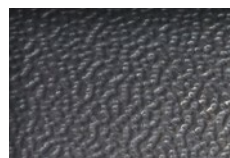
PPS31



N1



N3



N4

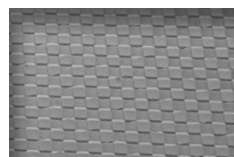


F12PPS

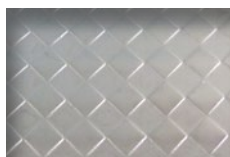
## INOX LTL



LINO LUCIDO  
POLISHED LINEN



QUADRO LUCIDO  
POLISHED SQUARE



ROMBO LUCIDO  
POLISHED RHOMBUS



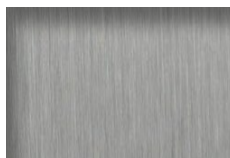
LUCIDO LTL  
POLISHED LTL



DAMA  
CHECKERS

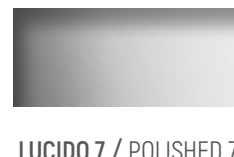


SCOTCH BRITE

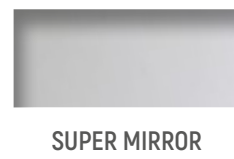


SATINATO G220  
SATIN G220

## STEEL COLOR



LUCIDO 7 / POLISHED 7



SUPER MIRROR



ELETTRICOLORATI  
ELECTROCOLOURED

## ALLUMINIO | ALUMINIUM



ANODIZZATO  
ANODIZED

# FINITURE / FINISHING

## RAL



9007 (STD)



RAL A SCELTA / CHOICE OF ANY RAL

## COLORI SPECIALI | SPECIAL COLOURS



FERRI MICACEI  
MICACEOUS



METALLIZZATI  
METALLIC COLOURS



PERLATI  
PEARL COLOUR



COLORI A EFFETTO  
SPECIAL PAINT

## VETRI | GLASS



TRASPARENTE  
TRANSPARENT



TRASPARENTE EXTRA CHIARO  
TRANSPARENT EXTRA CLEAR



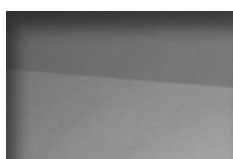
STOP-SOL CHIARO  
STOP-SOL CLEAR



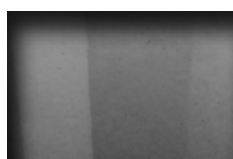
STOP-SOL BRONZO  
STOP-SOL BRONZE



STOP-SOL VERDE  
STOP-SOL GREEN



GRIGIO FUMÈ  
SMOKY GRAY



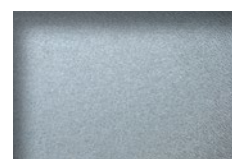
GRIGIO FUMÈ STAINATO  
SMOKY GRAY SATIN



BIANCO LATTE  
WITHE MILK



SATINATO ACIDATO NEUTRO  
SATIN FROSTED



STAMPATO TIPO C  
MOLDED C TYPE



## LTL S.r.l.

Via Variante di Cancelliera, snc

00072 Ariccia, Roma

Tel: +39 06 9345202

Fax: +39 06 90203092

email: [info@ltsrl.it](mailto:info@ltsrl.it)

**WWW.LTSLRL.IT**

